

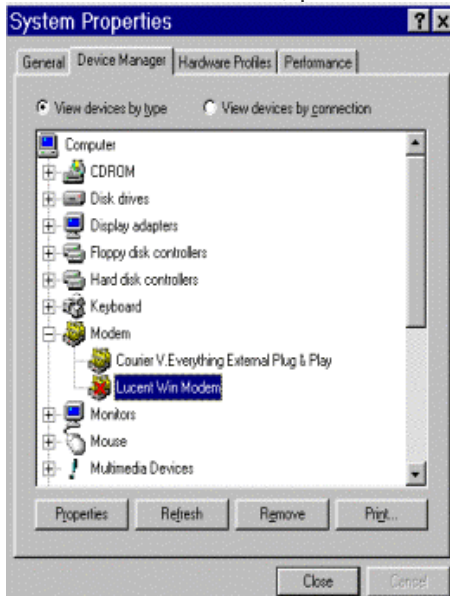


Resolve Mouse conflict

The most common hardware conflict seen is when both a modem and a mouse are using COM ports on the PC by which to connect, and the mouse and modem end up trying to (badly) share an IRQ. All COM ports use one of two IRQs; for example, 1 and 3 share the same IRQ, as does 2 and 4. So you can't have a mouse on COM1 and a modem on COM3 or each will work only intermittently. Remove one in Device Manager, and let Windows try to reinstall it better. Check our series on Device Manager for help.

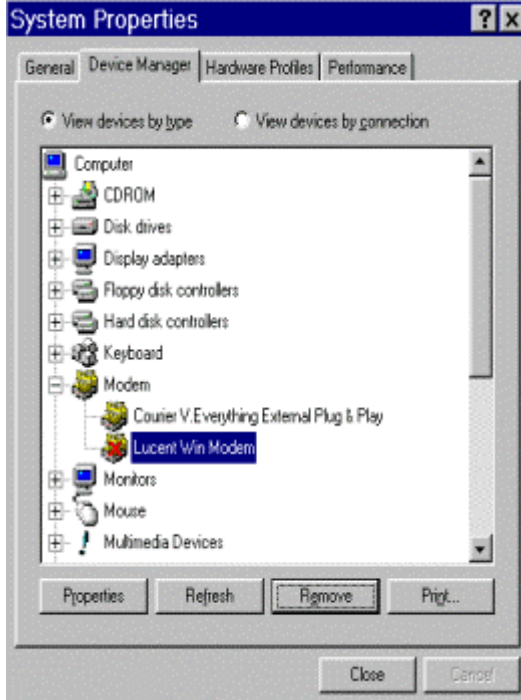


From Windows Start, point to Settings and then to Control Panel. Double-click the System icon.



From System, choose the Device Manager tab, then scan the Device Manager entries looking for a yellow exclamation mark or a red X indicating there is a problem. Check the mouse and the modem/COM1 in particular.





Since it will be hard to finish a Windows session without a modem, try removing the modem (or other hardware device involved in the conflict) by highlighting the entry and clicking Remove. The next time your PC restarts, it should see the device and reinstall it, usually to a free device. You can also avoid this conflict by moving either to a USB mouse or modem.

