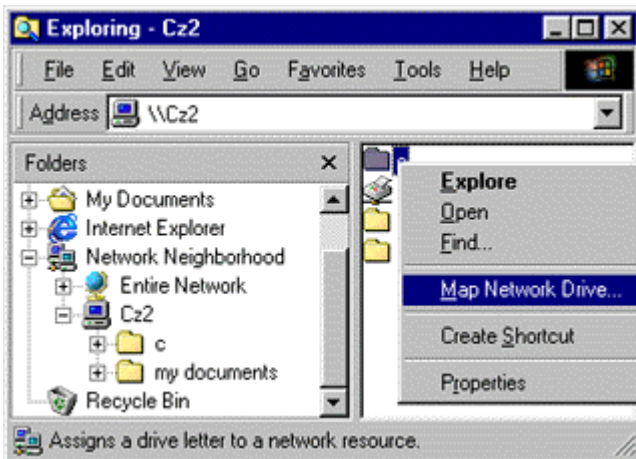
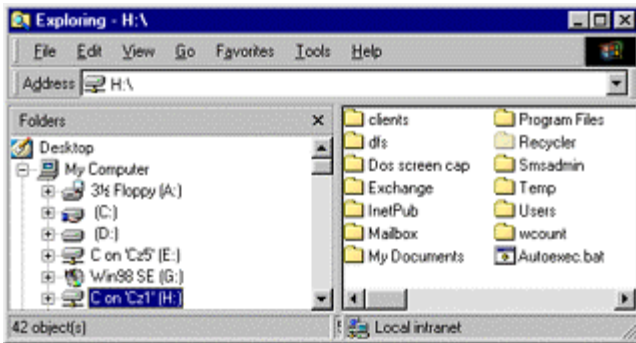
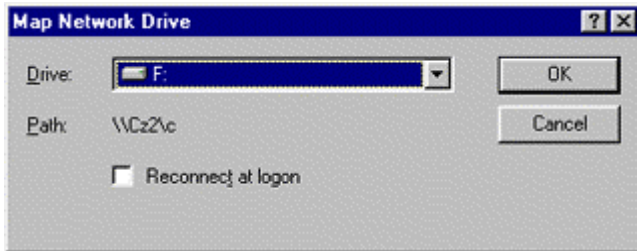




Mapping Network Drives

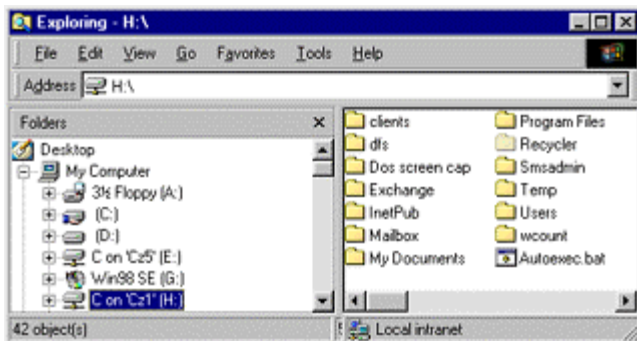




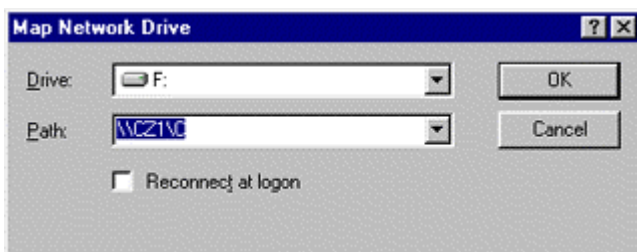
In the Drive field of the Map Network Drive dialog box, select the drive letter that you want to map to the share. The selector contains all of the drive letters that are not dedicated to local resources, including those that are already mapped. If you select a drive letter that is already mapped to a shared folder, then the system will prompt you to confirm that you want to overwrite the existing mapping.



If you want the system to automatically map the selected drive letter to the selected share every time the system starts (which is called a "persistent connection"), fill the Reconnect at Logon checkbox. If you leave the checkbox empty, the drive will stay mapped until you next log off the system.



Click the OK button to close the Map Network Drive dialog box and return to the Windows Explorer interface. The new drive letter then appears in the My Computer interface, where it can be treated like any drive letter representing a local resource.



When you select Map Network Drive from Windows Explorer's Tools menu or from the toolbar, the Map Network Drive dialog box includes a Path field in which you must supply the complete UNC name of the share that you want to map to the selected drive letter.

