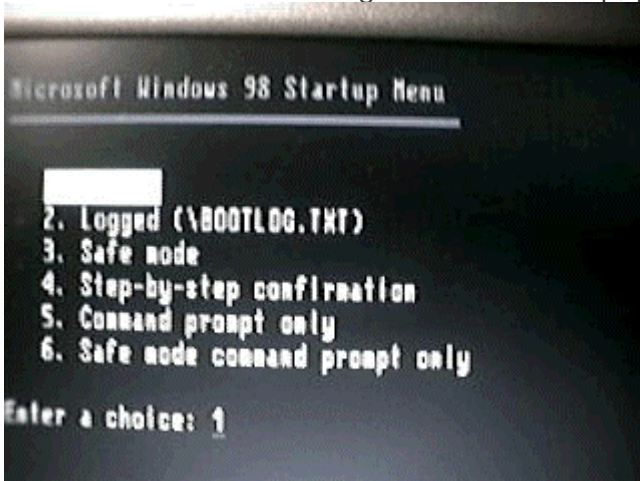




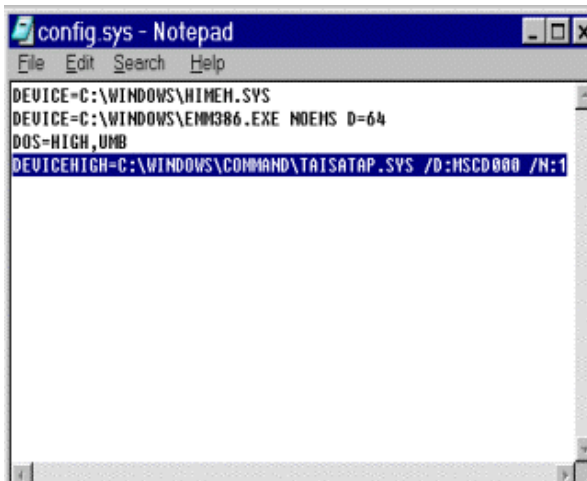
Clean boot in Windows 95/98

As the 'Windows 95 loading' screen comes up, press the F8 key on your keyboard.



From the Start menu that will be display, select "Step-by-Step Confirmation "

You'll be prompted to say Y(es) or N(o) to loading specific drivers and functions. Press Y to load the following: Dblspace driver, Himem.sys, Ifshlp.sys., and Dblbuff.sys. Load the Windows 95 graphical user interface (GUI), which loads all Windows drivers. Respond N(o) if prompted to load anything else.



If Windows loads, look at what may exist on your system that prevents it from booting normally. First, from Windows Start, point to Programs, then Accessories, and then choose Notepad. From Notepad's File menu, point to Open then choose to open the CONFIG.SYS file located in your C:\ or root directory. Look at drivers loading there under lines beginning with





```
autoexec - Notepad
File Edit Search Help
@C:\PROGRAM~1\NORTON~1\NADUX.EXE /Startup
@ECHO OFF
ren - By Windows Setup - LH C:\WINDOWS\COMMAND\MSCDEX.EXE /D:MSCD000 /L:E
SET BLASTER=A220 17 D1 T2
SET SNDSCAPE=C:\WINDOWS

PATH=%PATH%

PATH=%PATH%

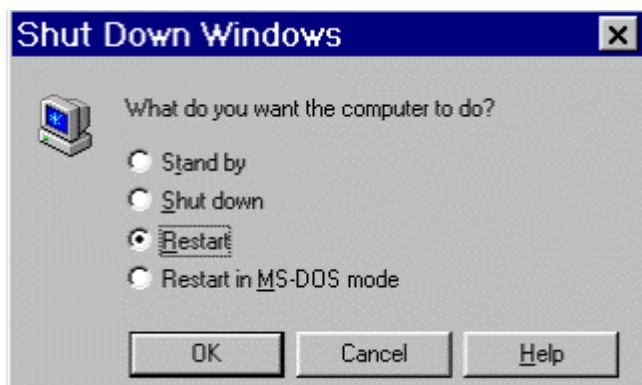
PATH=%PATH%

PATH=%PATH%;1"

PATH=%PATH%;"C:\Program Files\MS"
SET PATH=%PATH%;C:\WINDOWS\Twain_32\SwUSB

PATH=%PATH%;"C:\Program Files\MS"
```

With Notepad still open, use the File menu again. Choose Open, and open the AUTOEXEC.BAT file, also located in your C:\ or root directory. Look for any programs you may have recently added here that launch whenever the PC boots



If you made changes to either your CONFIG.SYS or AUTOEXEC.BAT files, you must restart the machine to have those changes take effect.

