



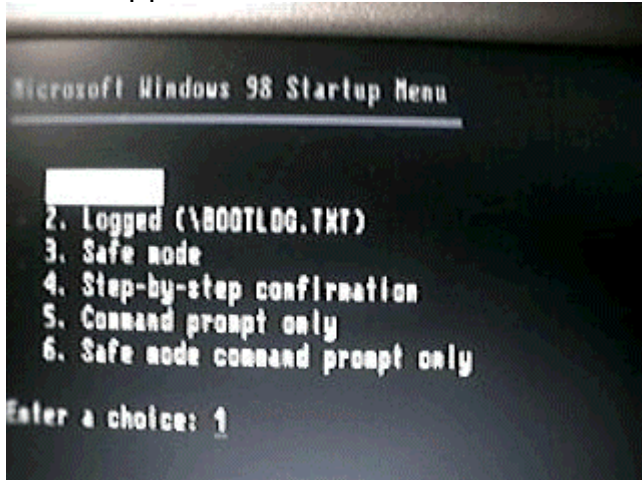
Starting up in Safe Mode

Sometimes it may be necessary to start your computer in 'Safe Mode'.

If you find your computer hangs before or upon displaying your Windows desktop you may need to start up windows in safe mode to diagnose the problem.

Start or restart your PC.

As Windows begins to start press and hold the F2 key until the Windows start menu appears.



Choose the number corresponding to Safe Mode in the Start Menu display.



Safe Mode is a special troubleshooting mode and your options for what you can see, do, and change are limited. But look in Control Panel and around Windows to see if you can determine where the problem with loading Windows may be occurring. In this mode you can add and remove devices. Try removing any new

