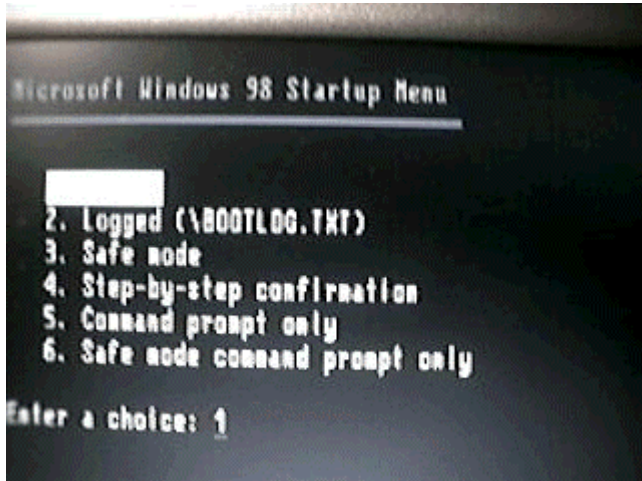




Startup halts on logo

Press and hold the power button on the front of the PC for 4 seconds until the system powers down, then press again to restart. Scandisk may automatically load to check the disk for problems. It's wise to let it finish, and then Windows should load.

If the system still stalls at the Windows logo, check other tutorials in this series, which talk about how to clean boot either Windows 95 or 98. Check these out.



If clean booting won't get you past the logo, try using safe mode by following the tutorials in these series, which address safe mode for

Consider what changes you may have made to the system since you were last able to start normally. If possible, reverse them to see if this removes the problem.

