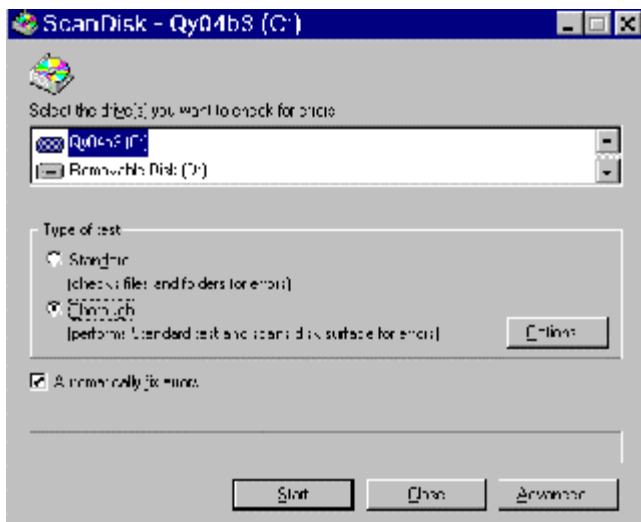
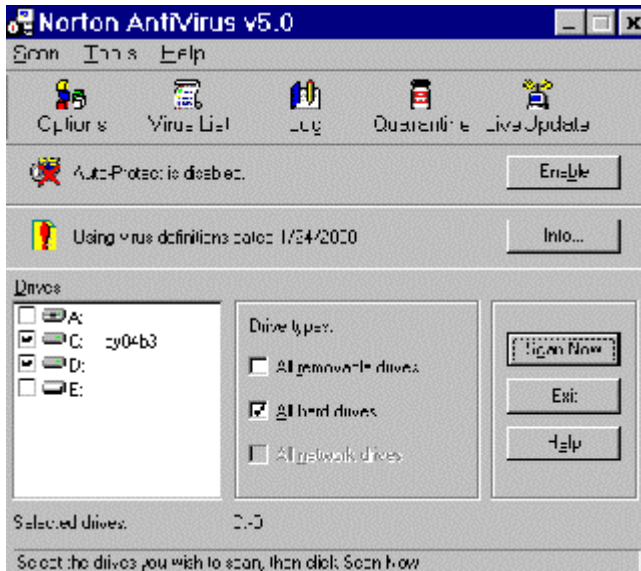




Damaged Folders



If available, try other disk "fix" tools such as found in Norton Utilities (make sure they state they work on your version of the operating system). See if it can detect and fix any errors.

Copy or backup any files you need, but refrain from making a full system backup if possible. You don't want to repeat any damaged structure.

```
A: \>
A: \>
A: \>
A: \>
A: \>format c: /s
```

